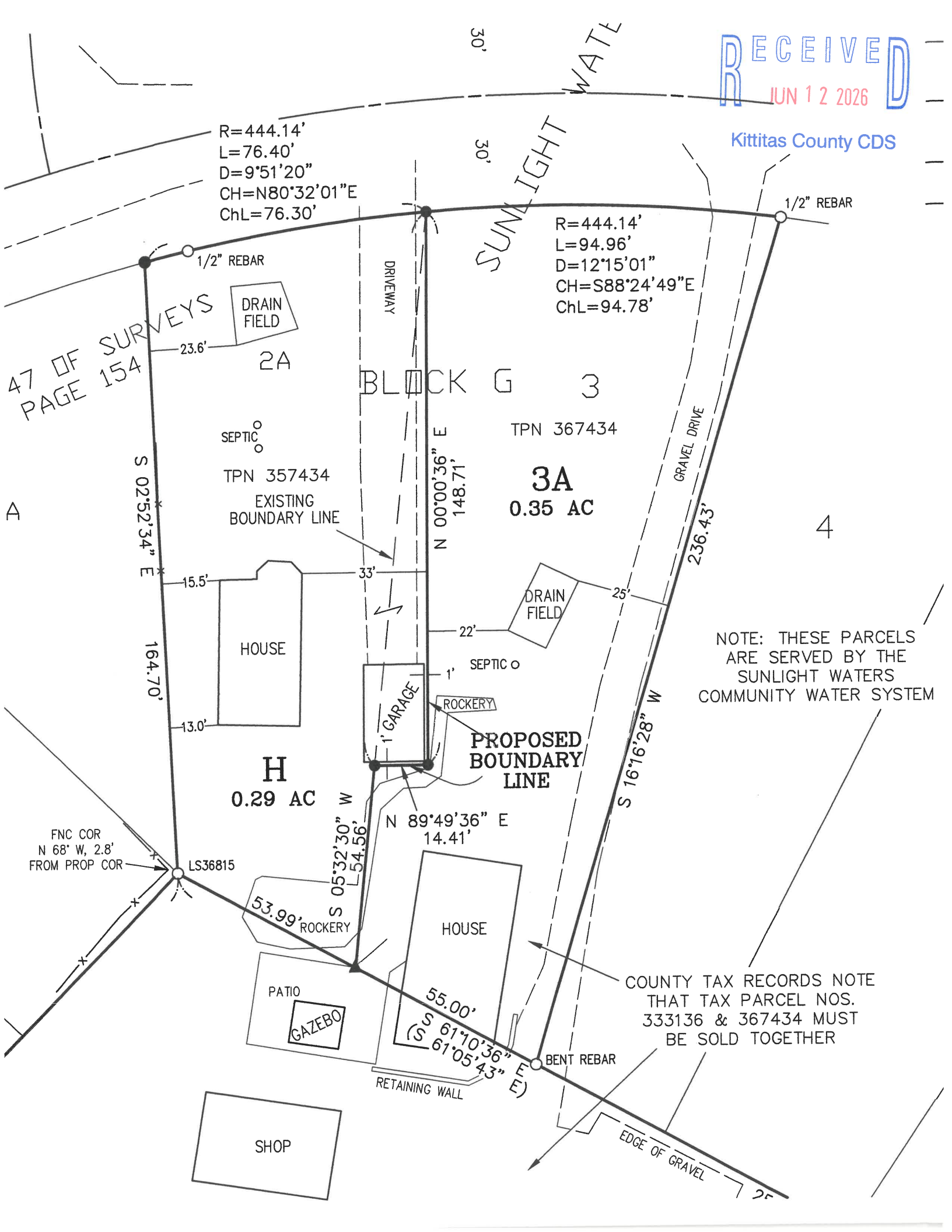


Kittitas County CDS



R=444.14'  
L=76.40'  
D=9°51'20"  
CH=N80°32'01"E  
ChL=76.30'

R=444.14'  
L=94.96'  
D=12°15'01"  
CH=S88°24'49"E  
ChL=94.78'

47 OF SURVEYS  
PAGE 154

BLOCK G 3

TPN 367434

3A  
0.35 AC

TPN 357434  
EXISTING  
BOUNDARY LINE

H  
0.29 AC

NOTE: THESE PARCELS  
ARE SERVED BY THE  
SUNLIGHT WATERS  
COMMUNITY WATER SYSTEM

COUNTY TAX RECORDS NOTE  
THAT TAX PARCEL NOS.  
333136 & 367434 MUST  
BE SOLD TOGETHER

FNC COR  
N 68° W, 2.8'  
FROM PROP COR

LS36815

BENT REBAR

RETAINING WALL

EDGE OF GRAVEL

SHOP

PATIO

GAZEBO

HOUSE

53.99' ROCKERY

HOUSE

PROPOSED  
BOUNDARY  
LINE

ROCKERY

SEPTIC

DRAIN  
FIELD

HOUSE

SEPTIC

DRAIN  
FIELD

2A

DRIVEWAY

GRAVEL DRIVE

1/2" REBAR

1/2" REBAR

SUNLIGHT WATE

S 02°52'34" E

164.70'

13.0'

15.5'

23.6'

N 00°00'36" E  
148.71'

33'

1'

1'

1'

1'

1'

1'

1'

1'

1'

1'

1'

1'

1'

1'

1'

1'

1'

1'

1'

N 89°49'36" E  
14.41'

55.00'

(S 61°10'36" E)

(S 61°05'43" E)

S 16°16'28" W

236.43'

25'

30'

30'

30'

30'

30'

30'

30'

30'

30'

30'

30'

30'

30'

30'

30'

30'

30'

30'

30'

30'

30'

30'

30'

30'

30'

30'

30'

30'

30'

30'

30'

30'

30'

30'

30'

30'

30'

30'

30'

30'

30'

30'

30'

30'

30'

30'

30'

30'

30'

30'

30'

30'

30'

30'

30'

30'

30'

30'

30'

30'

30'

30'

30'

30'

30'

30'

30'

30'

30'

30'

30'

30'

30'

30'

30'

30'

30'

30'

30'

30'

30'

30'

30'

30'

30'

30'

30'

30'

30'

30'

30'

30'

30'

30'

30'

30'

30'

30'

30'

30'